



Sun Street, Isleham, Cambs, CB7 5RU

Rent - £1,215 PCM Deposit - £1,401

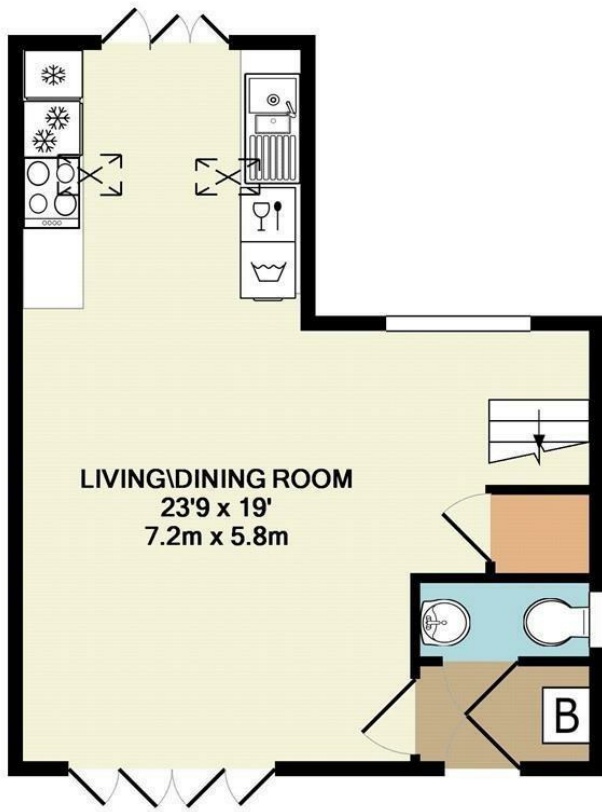
This well-presented 2 bedroom detached house is located in an often-requested village location, just 10 minutes from RAF Mildenhall. The property offers approximately 664 sq ft of accommodation and would make an ideal home for those looking for a convenient location with easy access to the base and surrounding areas.

The accommodation includes an open plan kitchen/lounge/diner, 2 bedrooms, a bathroom and a separate cloakroom. Further benefits include gas heating, parking and a courtyard. The property is available now.

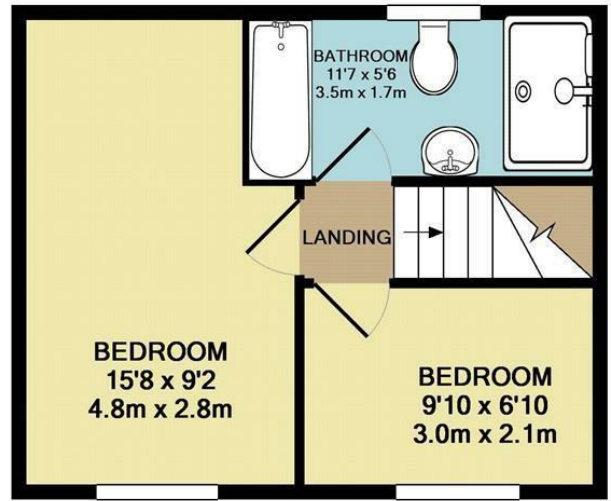
- DETACHED HOUSE
- 2 BEDROOMS
- OPEN PLAN KITCHEN/LOUNGE/DINER
- BATHROOM & CLOAKROOM
- ENERGY RATING - C
- OFTEN REQUESTED VILLAGE LOCATION
- MODERN
- PARKING & COURTYARD
- COUNCIL TAX BAND - D
- AVAILABLE NOW



Council Tax Band: D - EPC Rating: C 77



GROUND FLOOR
APPROX. FLOOR
AREA 365 SQ.FT.
(33.9 SQ.M.)



1ST FLOOR
APPROX. FLOOR
AREA 298 SQ.FT.
(27.7 SQ.M.)

TOTAL APPROX. FLOOR AREA 664 SQ.FT. (61.7 SQ.M.)

Whilst every attempt has been made to ensure the accuracy of the floor plan contained here, measurements of doors, windows, rooms and any other items are approximate and no responsibility is taken for any error, omission, or mis-statement. This plan is for illustrative purposes only and should be used as such by any prospective purchaser. The services, systems and appliances shown have not been tested and no guarantee as to their operability or efficiency can be given
Made with Metropix ©2012

